



# FM SERIES

## 5 AMP

### FILTER MODULE

CE

## FEATURES

- \* Quarter-Brick Size Meet Industrial Standard
- \* PCB Mount
- \* 5A Filter Module
- \* 200VDC Input Voltage Maximum
- \* All Capacitors are Multi-Layer Ceramic
- \* Fire & Smoke Meets EN45545-2



MODEL NUMBER	INPUT VOLTAGE	INPUT SURGE VOLTAGE	OUTPUT RATED CURRENT	DC RESISTANCE (+Vin to +Vo)	DC RESISTANCE (-Vin to -Vo)
FM05D200P	200 VDC max.	250 VDC max.	5 A max.	34 mΩ typ.	34 mΩ typ.

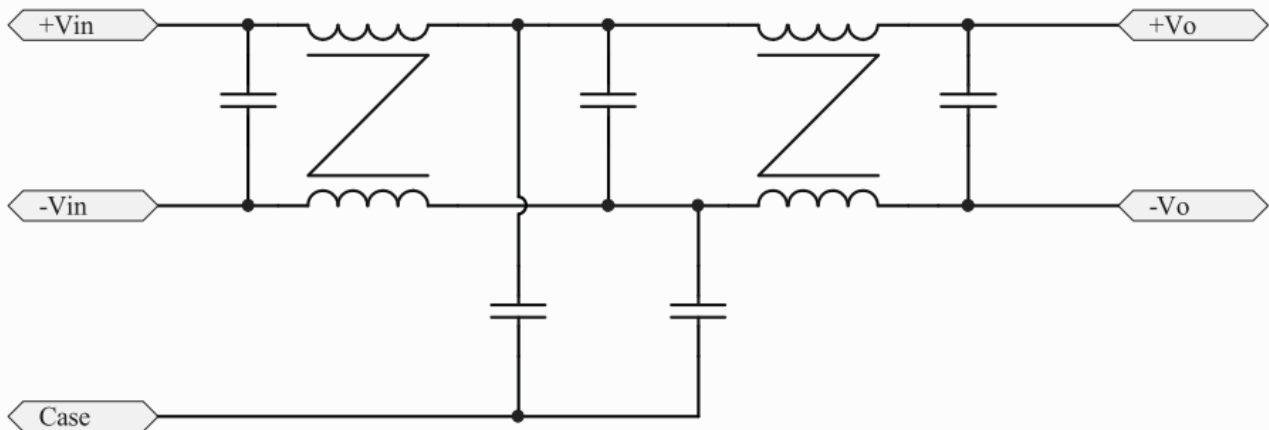


Figure1 Internal Schematic for FM05D200P Module

# SPECIFICATIONS

All Specifications Typical At Nominal Line, Full Load, and 25°C Unless Otherwise Noted

## INPUT SPECIFICATIONS:

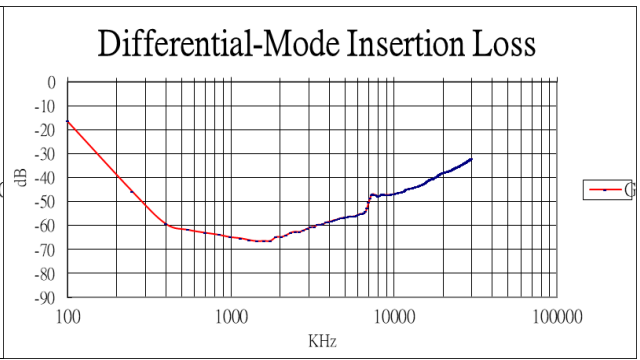
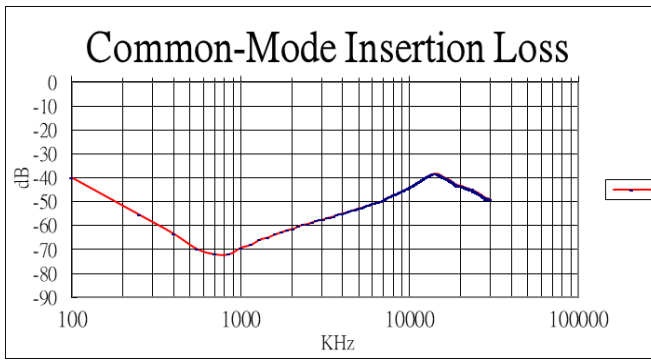
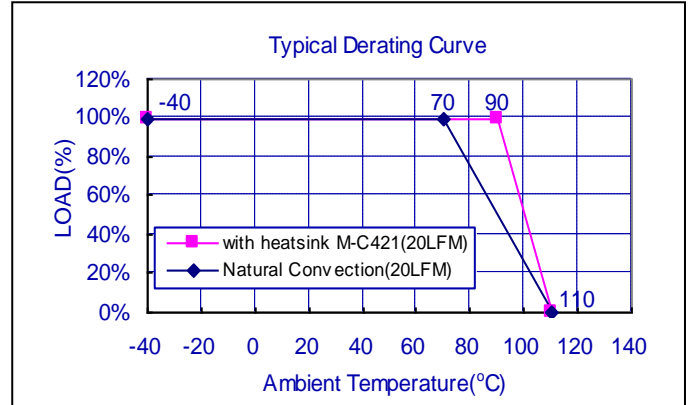
Input Voltage Range ..... 200Vdc max.  
 Input Surge Voltage ..... 250Vdc/1s  
 Input Rated Current (note 1) ..... 5A max

## GENERAL SPECIFICATIONS:

Isolation Voltage ..... (Input/Case, Output/Case) ..... 2250Vdc min.  
 1500Vac min.  
 Isolation Resistance .....(Input/Case, Output/Case)..... 10<sup>9</sup>ohm min  
 DC Resistance ..... See Table  
 Operating Case Temperature Range (note 1) ..... -40°C to +110°C  
 Storage Temperature Range ..... -55°C to +110°C  
 Dimensions ..... 2.28x1.45x0.50 inches (57.9x 36.8x12.7 mm)  
 Case Material ..... Aluminum Base-plate with Plastic Case  
 Potting.....Silicone Potting  
 Weight ..... 59g

## NOTE :

1. Maximum case temperature under any operating condition should not exceed 110°C.

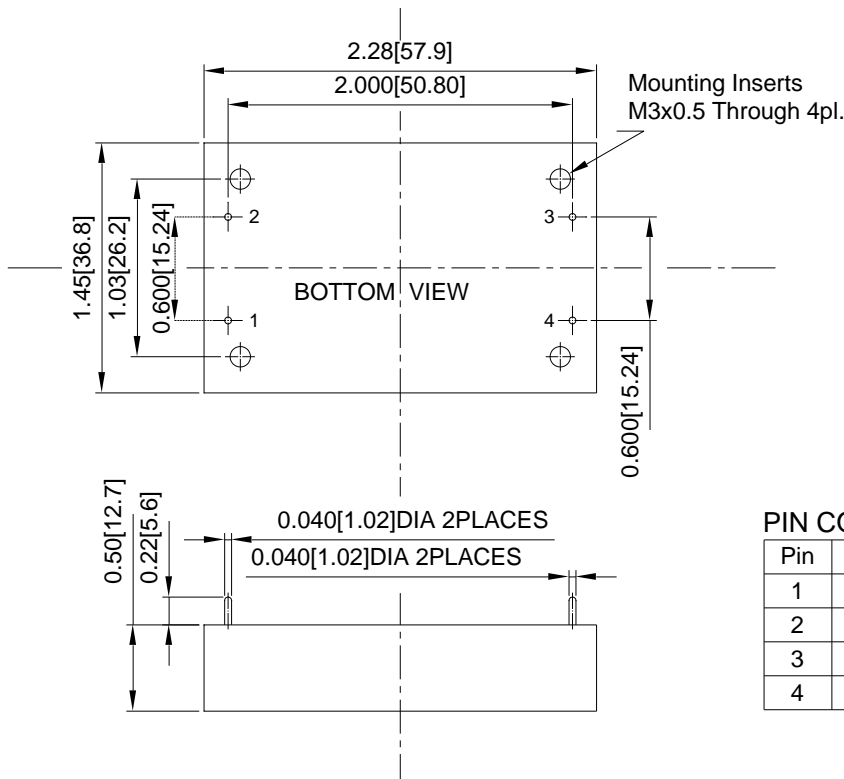


Typ common-mode and differential-mode insertion loss

All Dimensions In Inches (mm)

Tolerance Inches: X.XX= ±0.02 , X.XXX= ±0.010

Millimeters: X.X= ±0.5 , X.XX=±0.25



## PIN CONNECTION

Pin	Function
1	+V Input
2	-V Input
3	-V Output
4	+V Output